

# Station #1

- Make a sketch of this plant and its root system.



- I identify the following:

a) Type of root system?

b) Vascular or Nonvascular plant?

# Station #2

- Make a sketch of this tree slice with the exact number of rings.



- I identify the following:

a) How many rings can you count?

b) Age of tree at the time it was cut down?

# Station #3

- Make a sketch of this plant stem.

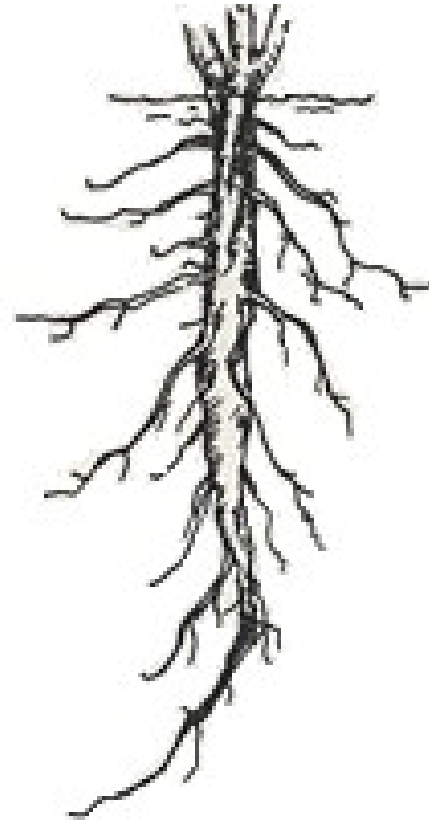


I identify the following:

- a) What type of stem is shown here?
- b) List two functions of stems.

# Station #4

- Make a sketch of this plant and its root system.



I identify the following:

- a) What type of root system?
- b) List three functions of the roots?

# Station #5

- Make a sketch of this plant stem.



I identify the following:

a) Stem type?

b) Is this an Angiosperm or Gymnosperm?

David Webb

# Station #6

- Make a sketch of this plant

- I identify the following:

- a) Seed or seedless plant?

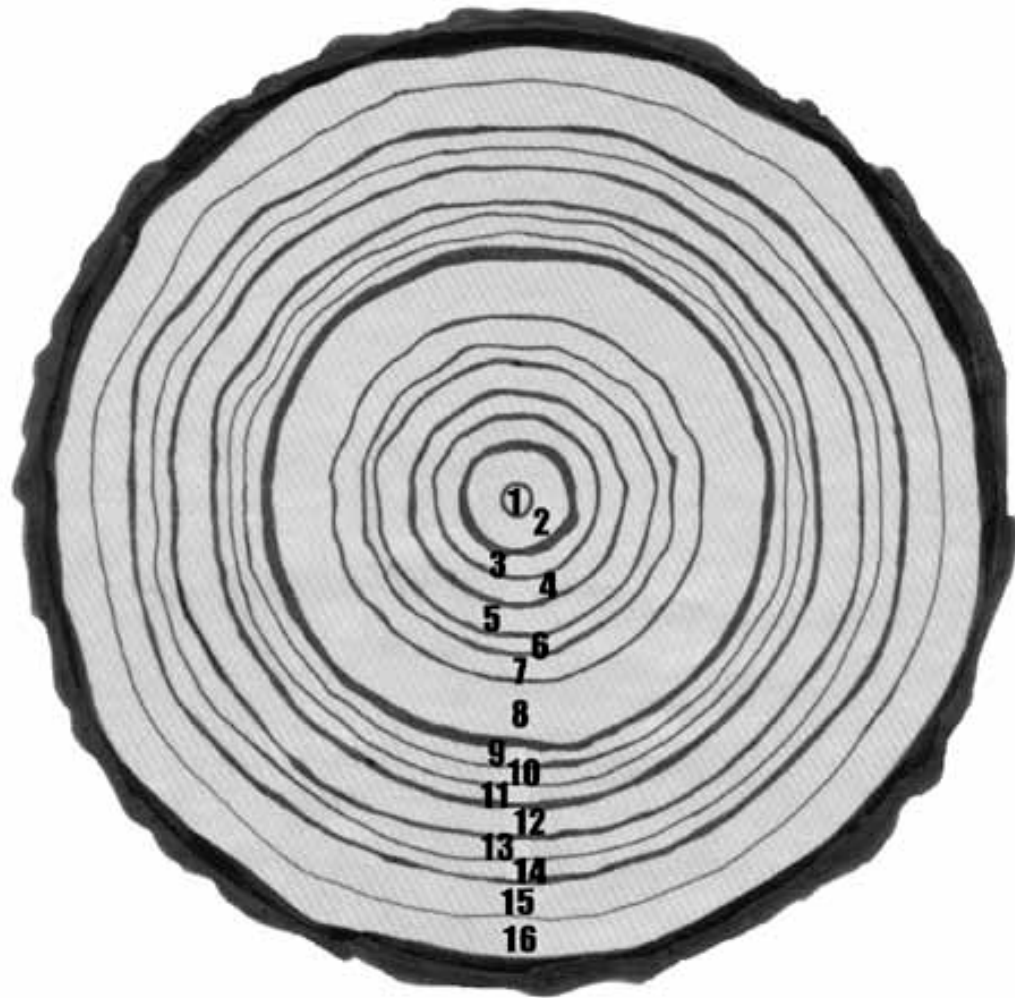
- b) What does this plant need to reproduce?



# Station #7

Make a sketch of this tree slice.

- This tree was cut 3 years ago. Write that year:
- How old was the tree?
- What year did the tree start growing?
- Find the ring that grew the year you were born. Was it a dry year?
- In what year of growth was there the most rainfall?



# Station #8

- Make a sketch of one of these leaves.



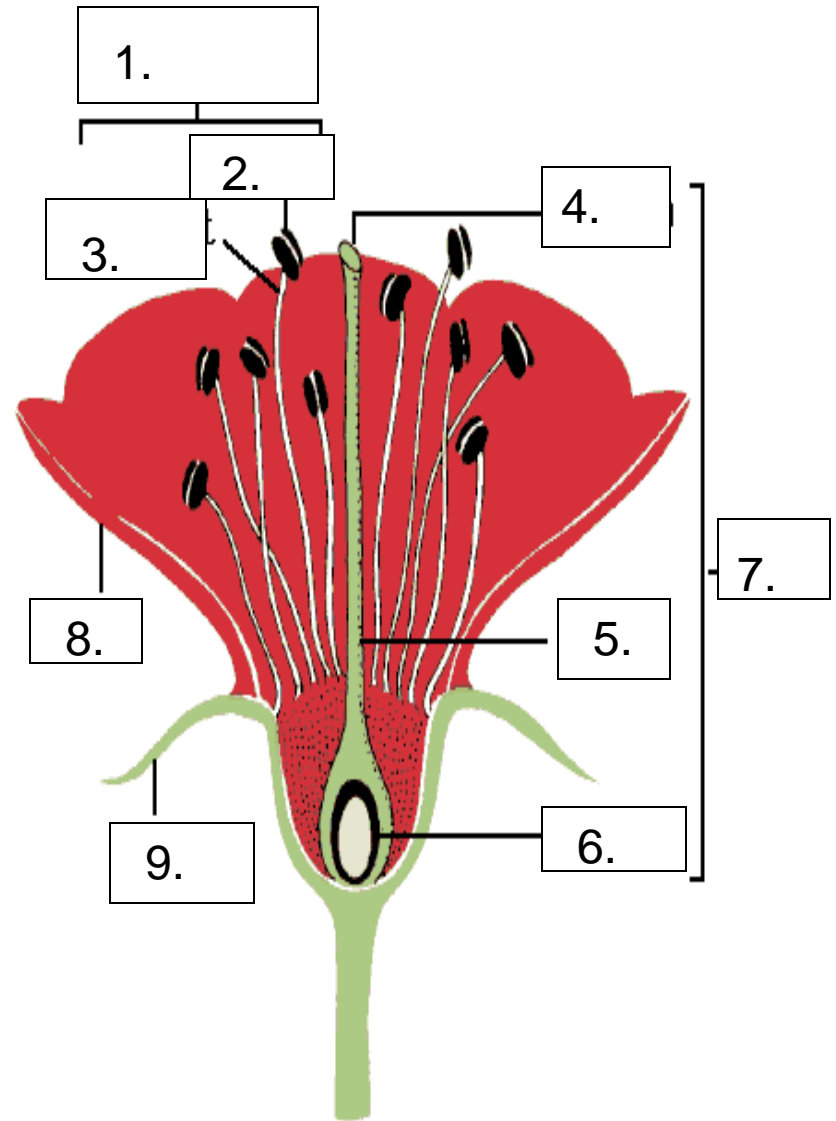
- I identify the following:

a) Where is food primarily made in plants?

b) In what tissue is food primarily conducted (moved)?

**Station #9:** List the missing structures on this flower cross section (see p 393, fig. 26):

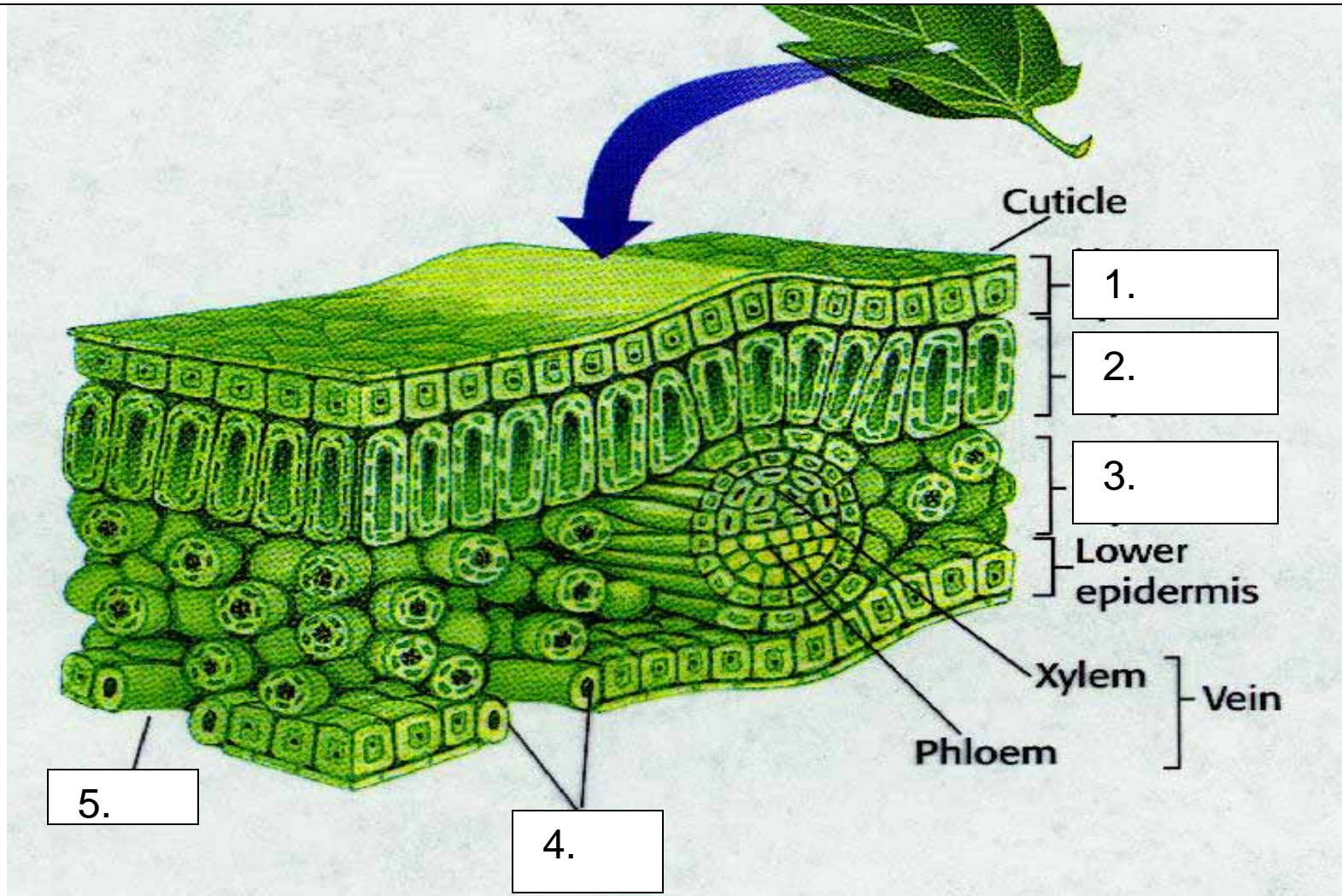
- Petals
- Sepals
- Pistil with the Stigma, Style, Ovary
- Stamen with the Anther & Filament.



# *Station #10*

- I identify the following from your sketch drawn for Station #9:
  - a) What is the male reproductive part called?
  - b) What is the female reproductive part called?

Station # 11 : Make a sketch of this leaf cross section & label the following:



stoma, epidermis, spongy layer, guard cells, palisade layer.

# Station #12

• Make a sketch of one or two individual strands of this plant:

a) What is the common name of this plant?

b) What is the group of plants that this organism belongs to?



# Station #13

- Make a sketch of this plant structure:
  - a) Is this a seed bearing or seedless plant?
  - b) Is this a gymnosperm or an angiosperm?

